



Community as a Living Lab

University Neighbourhoods Association
September 2010

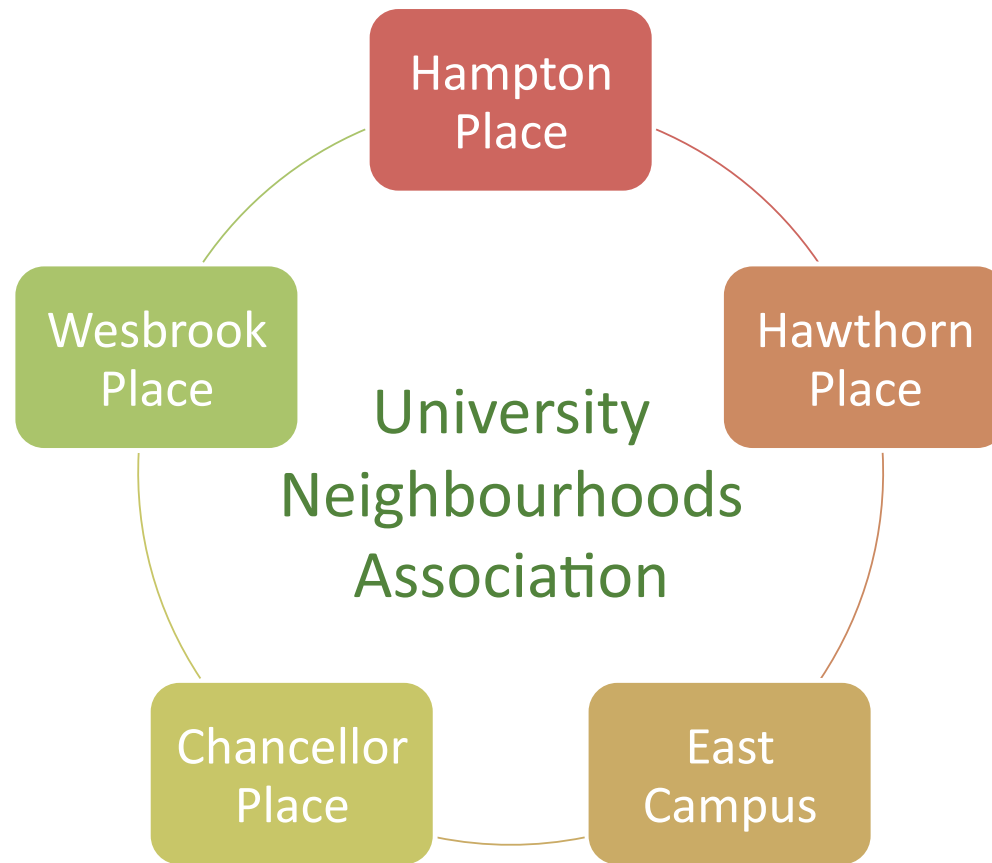




About the UNA

- Established in 2002
- Five UNA neighbourhoods
- Approximately 7,500 residents
- Municipal-like services through local governance (elected and appointed Board)
- UTown goal: establish a vibrant and sustainable community

UNA Neighbourhoods





**University
Neighbourhoods
Association**





Sustainability in the UNA Neighbourhoods

- compact community with high standards for construction (REAP)
- 65% work or study at UBC (commitment to 50%)
- strong volunteer participation (community gardens, plant stewardship, sustainability committee)
- sustainability programs (e.g., composting, landscaping)
- UNA Sustainability Strategy
- strategic partnerships (UBC institutional and academic)




UNA and UBC kitchen waste composting project



- **1039 homes served (35%)**
- **18 buildings served (40%)**
- **48,000kg/yr diverted locally**
- **UBC, UBCPT, UNA partnership**







UNA Sustainability Commitment

The UNA is committed to addressing global sustainability on a local basis, within the UNA neighbourhoods under its jurisdiction.

The University Neighbourhoods Association commits to:

- Being responsible stewards of air, land and water of the UNA neighbourhoods
- Providing sustainability projects and programs that enhance the ability for residents to live, work and play sustainably
- Finding cost effective solutions for sustainability for the UNA community



UNA Community Sustainability Goals

Community Engagement

Community Energy Conservation and Emissions Reduction

Community Waste Reduction

Community Water Conservation

Natural Function, Features and Local Food

Cost Effective Services and Programs



UNA Community Sustainability Principles

Engaging and Supporting Residents.

Demonstrating Leadership.

Achieving Shared Outcomes through Partnership.

Community as a Living Lab.



Sustainability Indicators

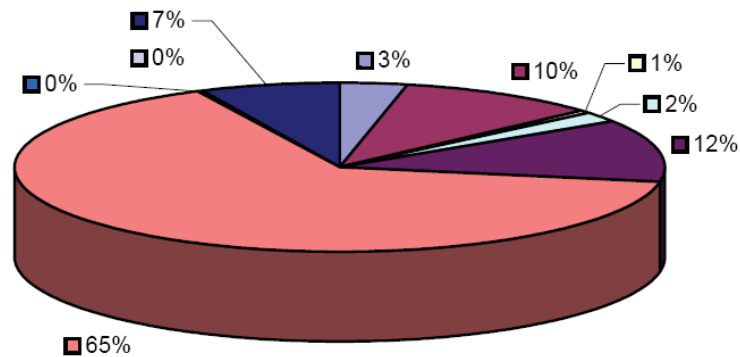
- *performance measures that allow assessment of progress towards organizational goals (i.e., UNA sustainability goals)*
- *feedback mechanism for management decisions*
- *establish baselines*
- *monitoring allows for learning*
- *a framework for setting targets*

Sustainability Indicators

Example (waste diversion – low rise strata)



- EPR
- Paper
- Glass
- Metal
- Plastic
- Organics
- C&D
- Other
- Added





UNA – UBC Partnerships for Sustainability

- UBC – UNA residential compost program
- UBCPT – UNA landscaping maintenance
- SALA Sustainable Parks project
- *BC Hydro Sustainable Communities program*
- *USI partnership*




Community as a Living Lab Opportunities

- technology (new buildings and retrofits; engineering)
- cost effectiveness (Sauder)
- behaviour (social sciences)
- education



Community as a Living Lab Opportunities

- SEEDS program
- USI Student Desk
- Graduate research/academic assistance programs
- Waste Free UBC Committee
- Smart Energy System Committee



Finding the win – win: programs that benefit residents and provide academic opportunities

