







778-565-7211  
KUBER TAXI  
www.kuber-taxi.com

CENTRAL CITY





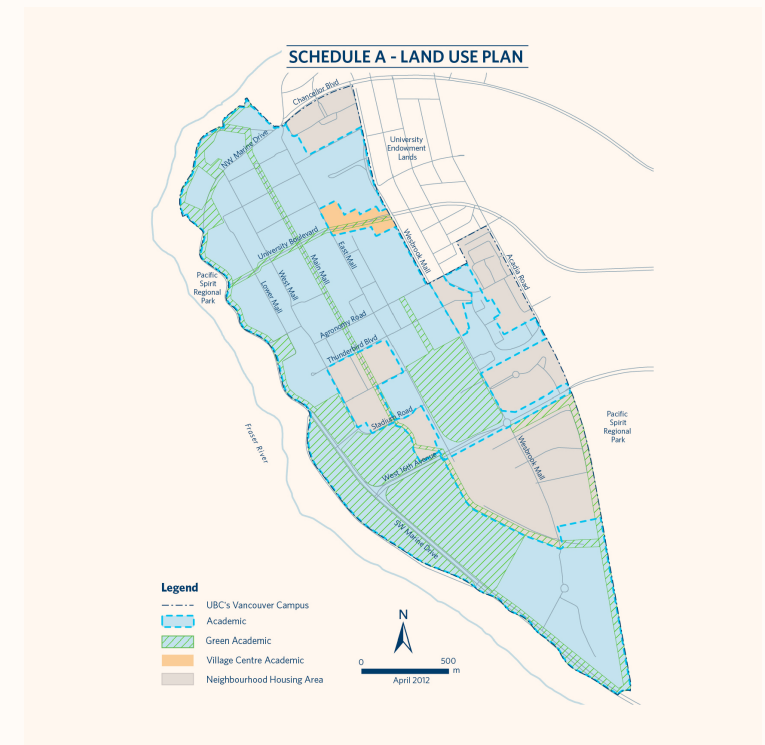
# BALANCING TRANSPORTATION AND THE PUBLIC REALM

## Elevated SkyTrain Integration and the Campus Experience

Wednesday, May 1st , 2019

Emily Johnson, Sean Bailey, Nidah Dara, Jose Wong CK

Partners: Matthew Roddis, Adam Hyslop, Chris Fay & David Gill





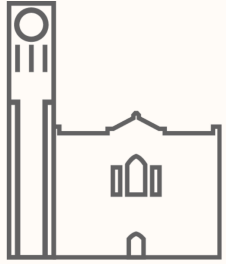
**Purpose:** Identify and evaluate approaches to accommodating an elevated SkyTrain on the UBC Point Grey Campus

IDENTIFYING OPTIONS

EXPLORING STRATEGIES

APPLYING STRATEGIES

## IDENTIFYING OPTIONS



Memorable &  
Accessible



Functional  
Connections



Lived  
Experience



Sustainable  
Connections



Access to  
Nature

## EXPLORING STRATEGIES

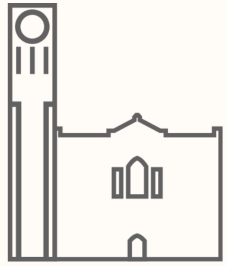
## APPLYING STRATEGIES



# IDENTIFYING OPTIONS

# EXPLORING STRATEGIES

# APPLYING STRATEGIES



Memorable & Accessible



Functional Connections



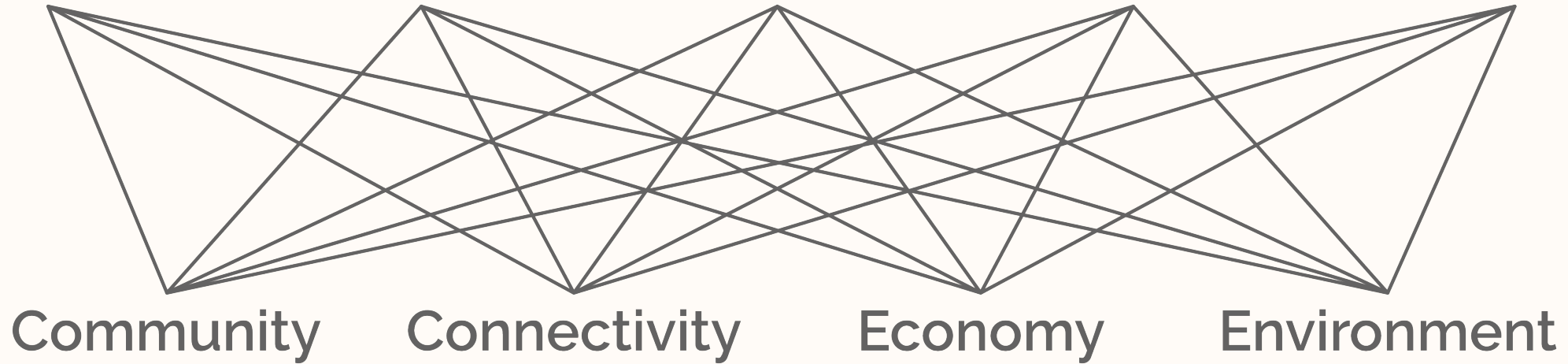
Lived Experience



Sustainable Connections



Access to Nature



Community

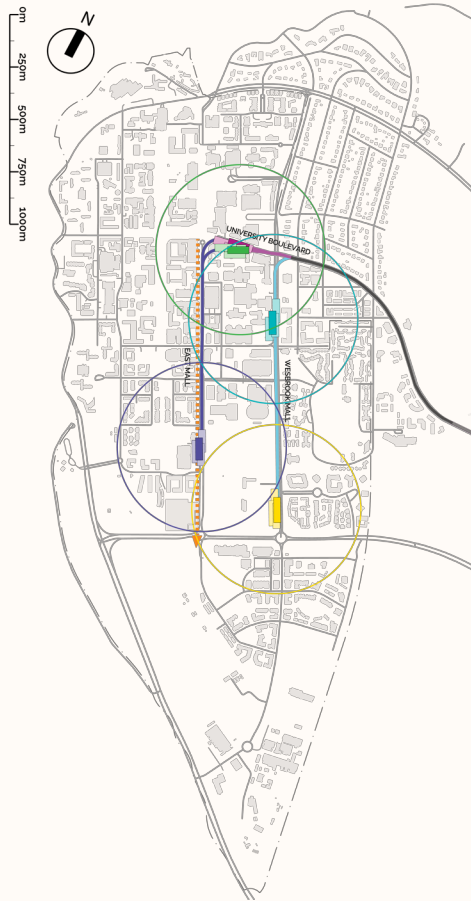
Connectivity

Economy

Environment

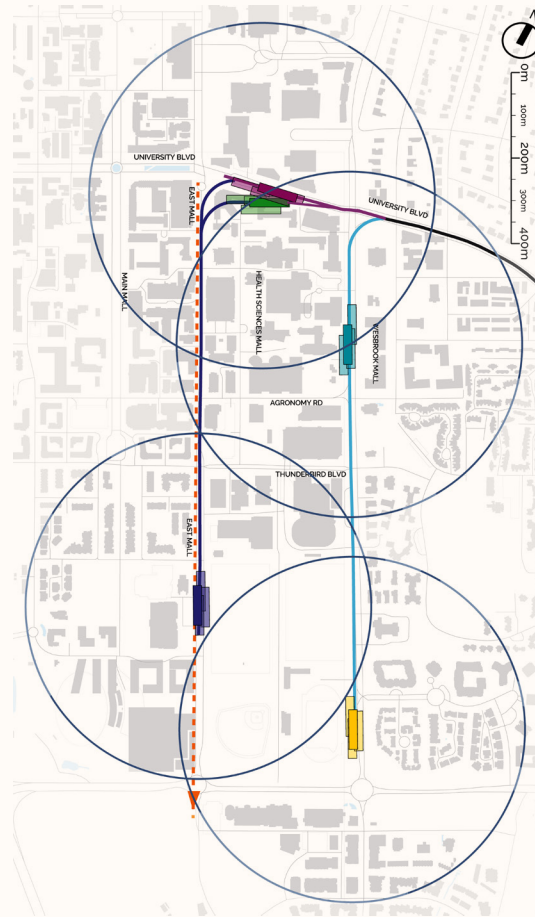
# IDENTIFYING OPTIONS

## Campus



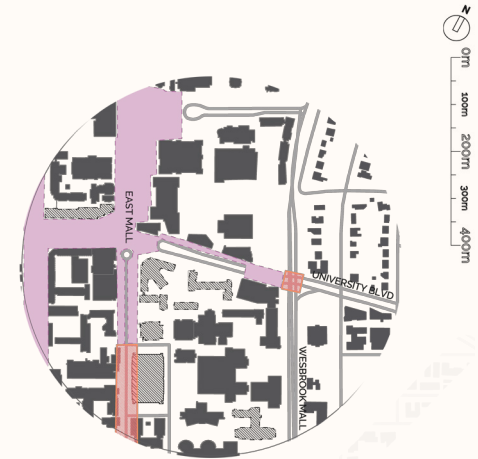
# EXPLORING STRATEGIES

## Neighbourhood



# APPLYING STRATEGIES

## Station Area





### Design Workshop



### Design Strategies



Efficient Movement



Spaces for People



Complete Neighbourhoods



Safe & Secure

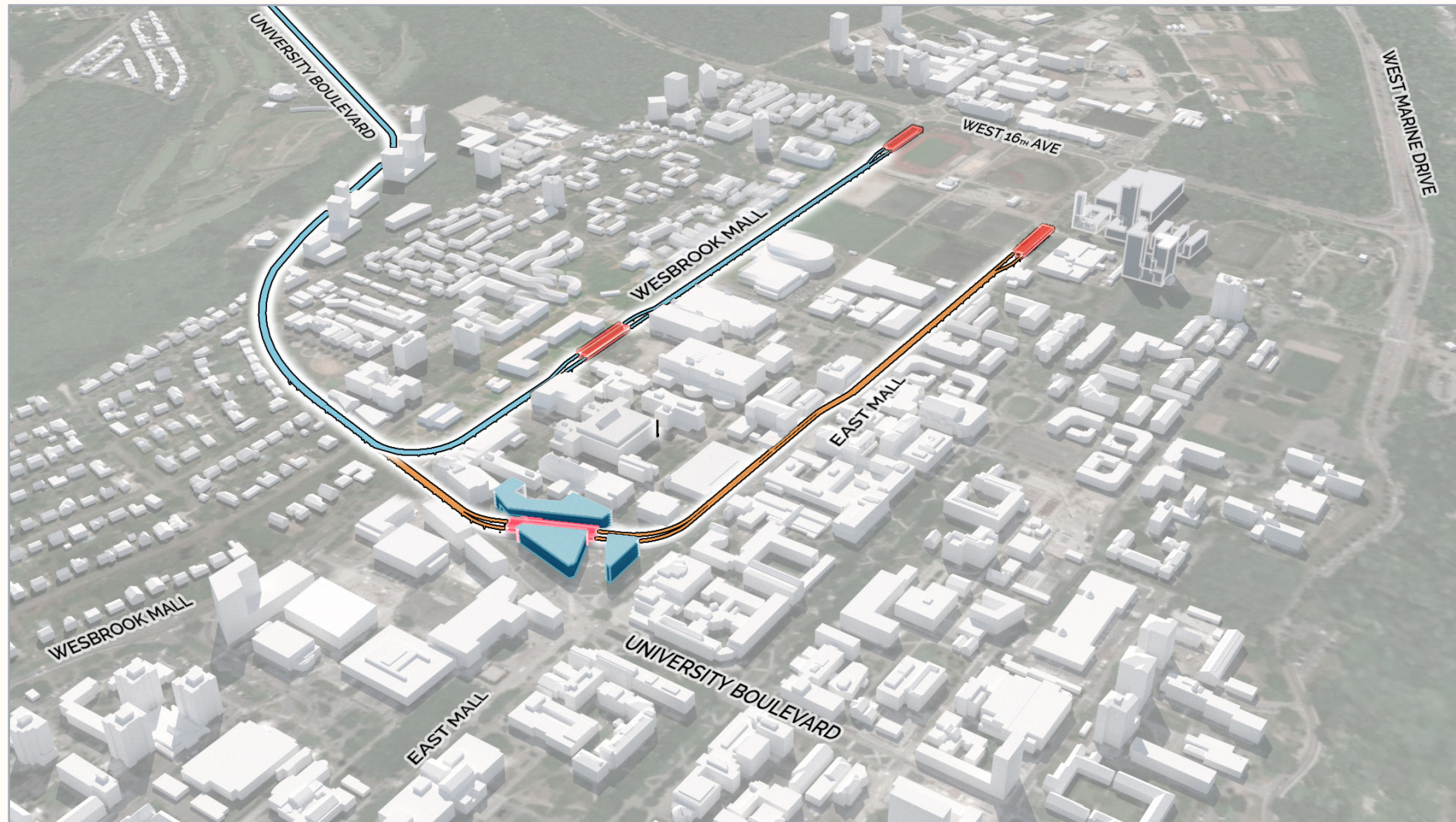


Sense of Place

IDENTIFYING OPTIONS

EXPLORING STRATEGIES

APPLYING STRATEGIES





IDENTIFYING OPTIONS

EXPLORING STRATEGIES

APPLYING STRATEGIES



**WESBROOK MALL** *Shaping the future*



IDENTIFYING OPTIONS

EXPLORING STRATEGIES

APPLYING STRATEGIES



**WESBROOK MALL** *Shaping the future*

Central Station



# IDENTIFYING OPTIONS

# EXPLORING STRATEGIES

# APPLYING STRATEGIES

## Green Areas of Rest



(The Underline Miami, 2019)



**WESBROOK MALL** *Shaping the future*

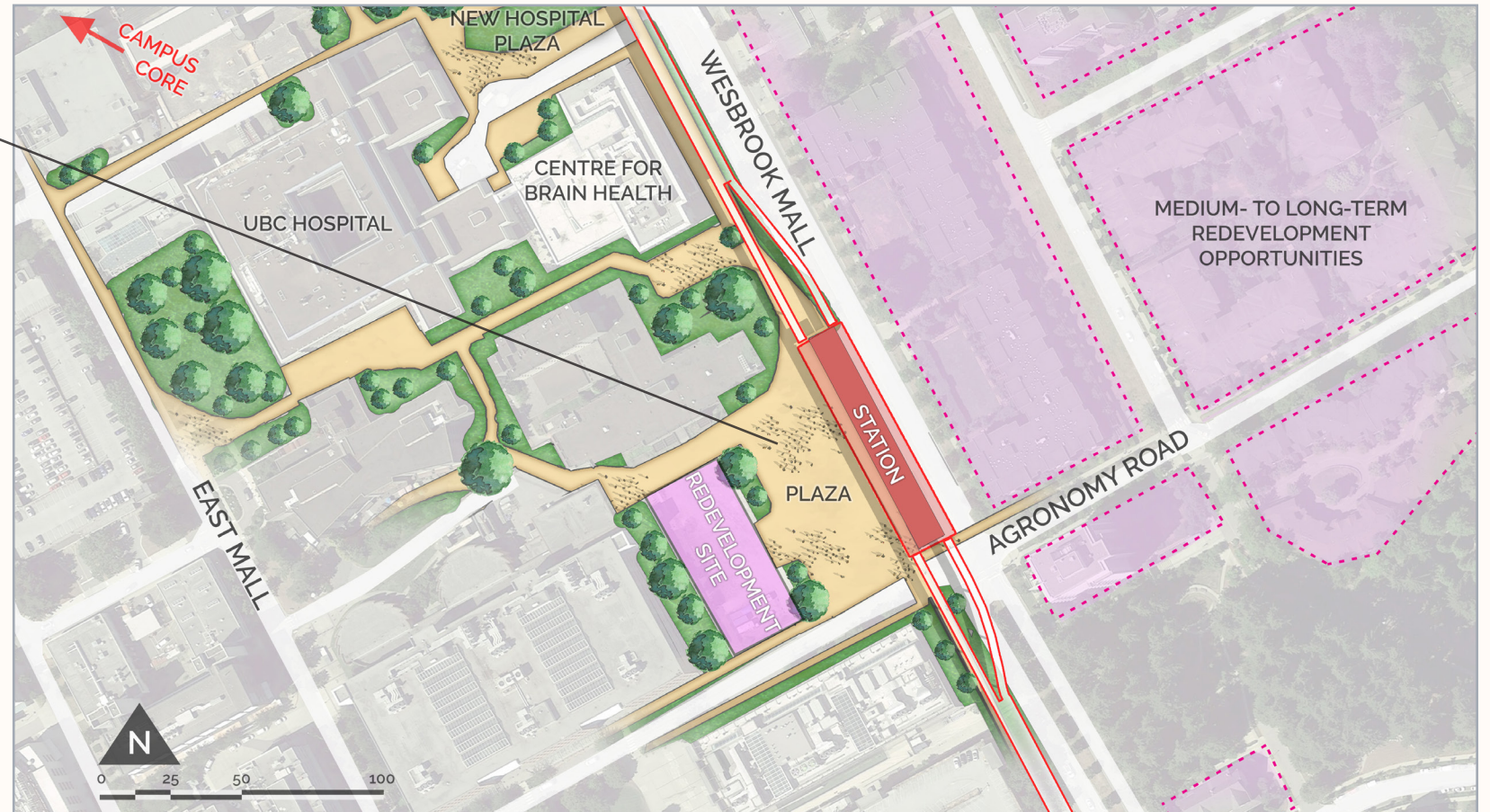
Central Station



Station Area Plaza



Mt. Eden Station, Auckland (Mt. Eden Station Entrance, 2018).





# IDENTIFYING OPTIONS

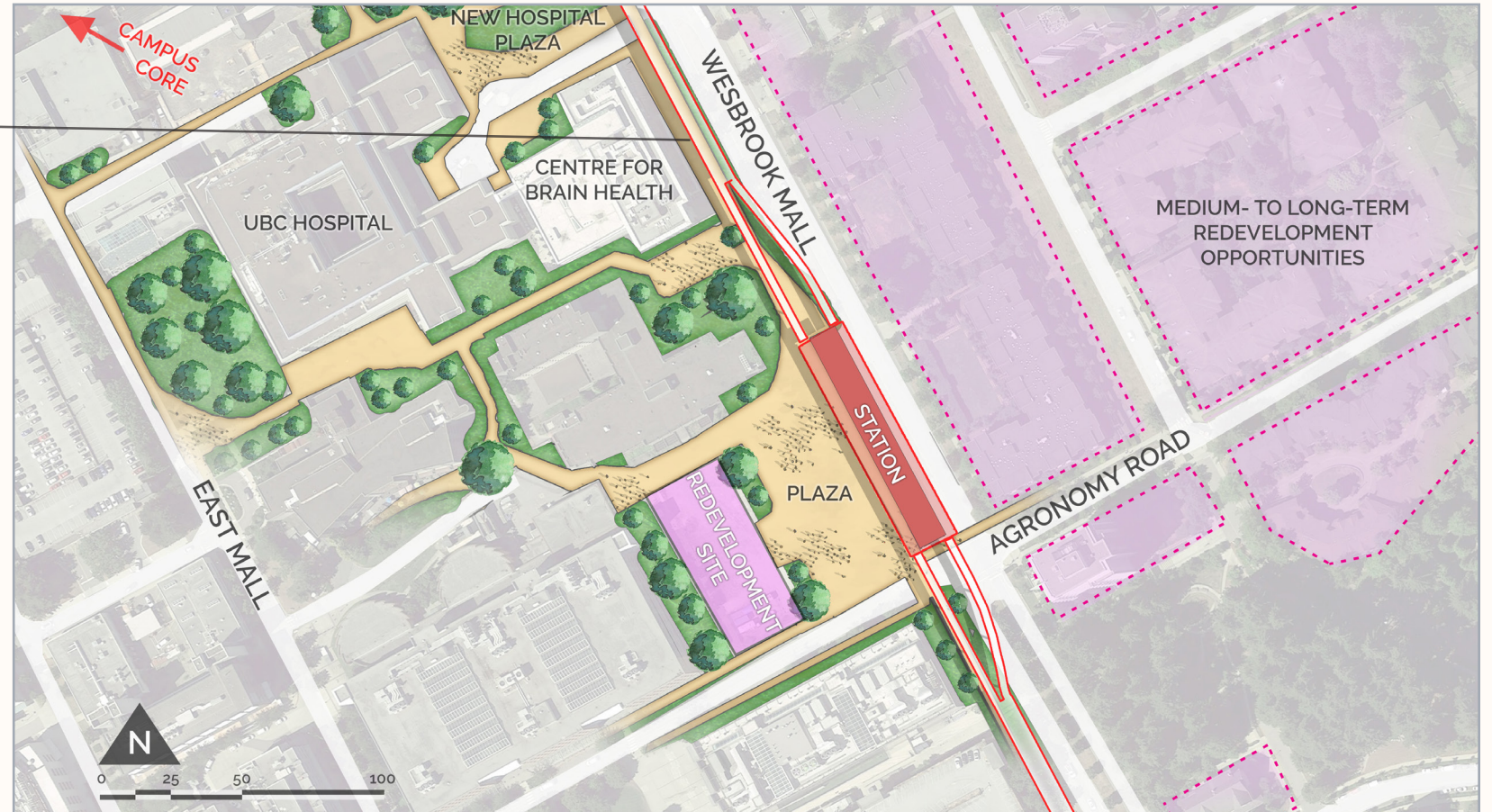
# EXPLORING STRATEGIES

# APPLYING STRATEGIES

## Under Guideway Animation



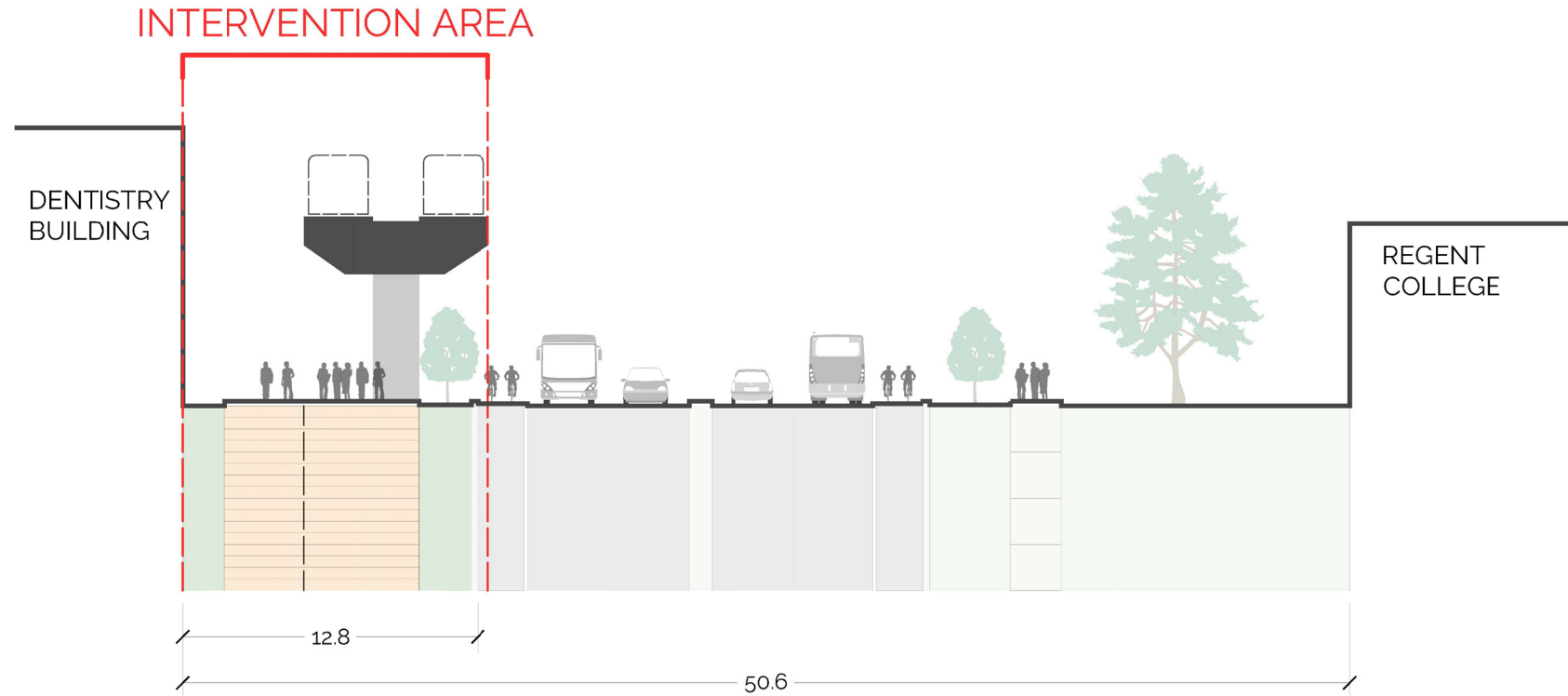
(Stanton Williams Architects, 2014)



**WESBROOK MALL** *Shaping the future*

Central Station





WESBROOK MALL NORTH  
FACING NORTH

IDENTIFYING OPTIONS

EXPLORING STRATEGIES

APPLYING STRATEGIES



**WESBROOK MALL** *Shaping the future*

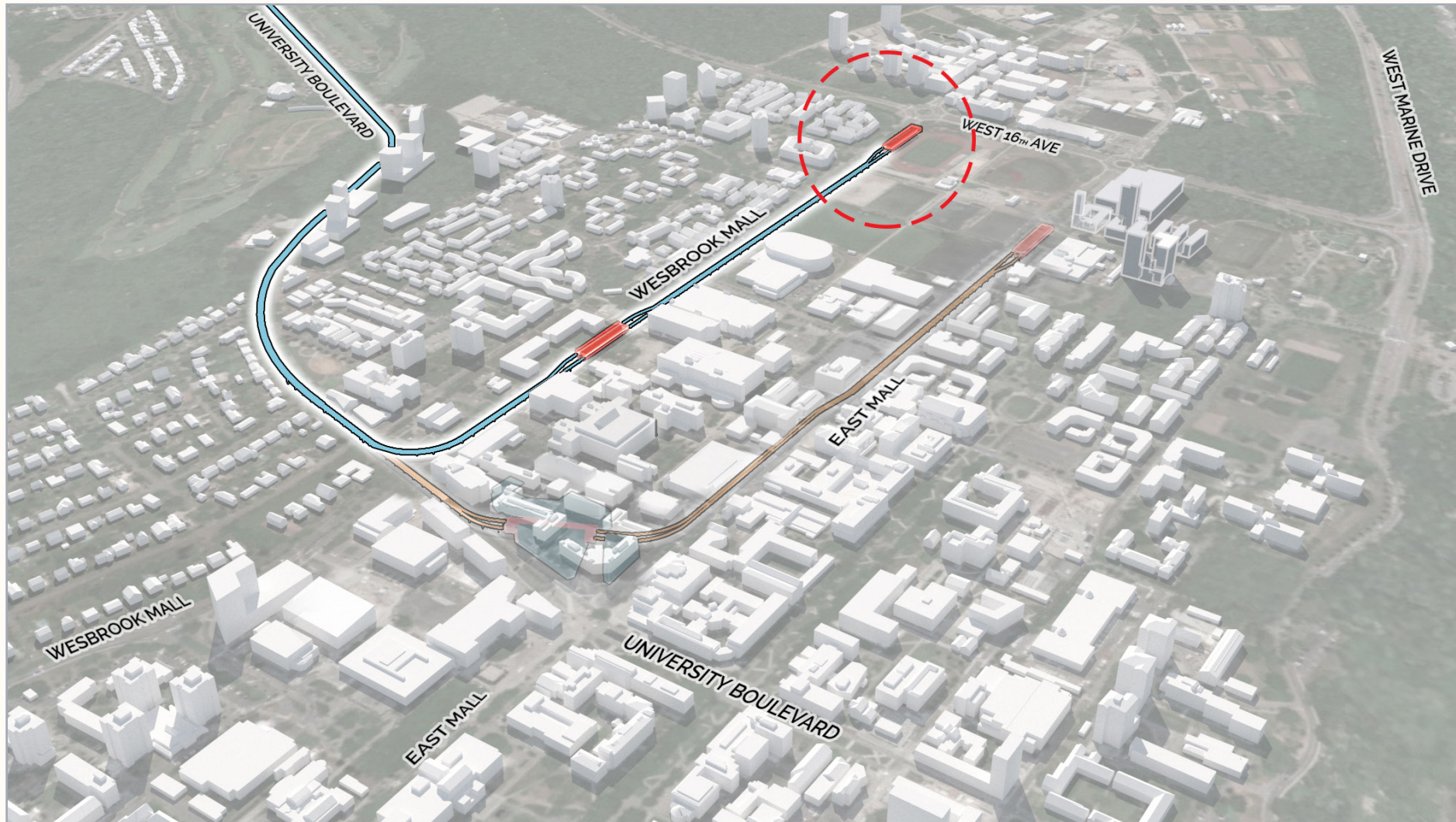
Central Station



IDENTIFYING OPTIONS

EXPLORING STRATEGIES

APPLYING STRATEGIES



**WESBROOK MALL** *Shaping the future*

South Station



# IDENTIFYING OPTIONS



# WESBROOK MALL

# EXPLORING STRATEGIES



# APPLYING STRATEGIES

# South Station

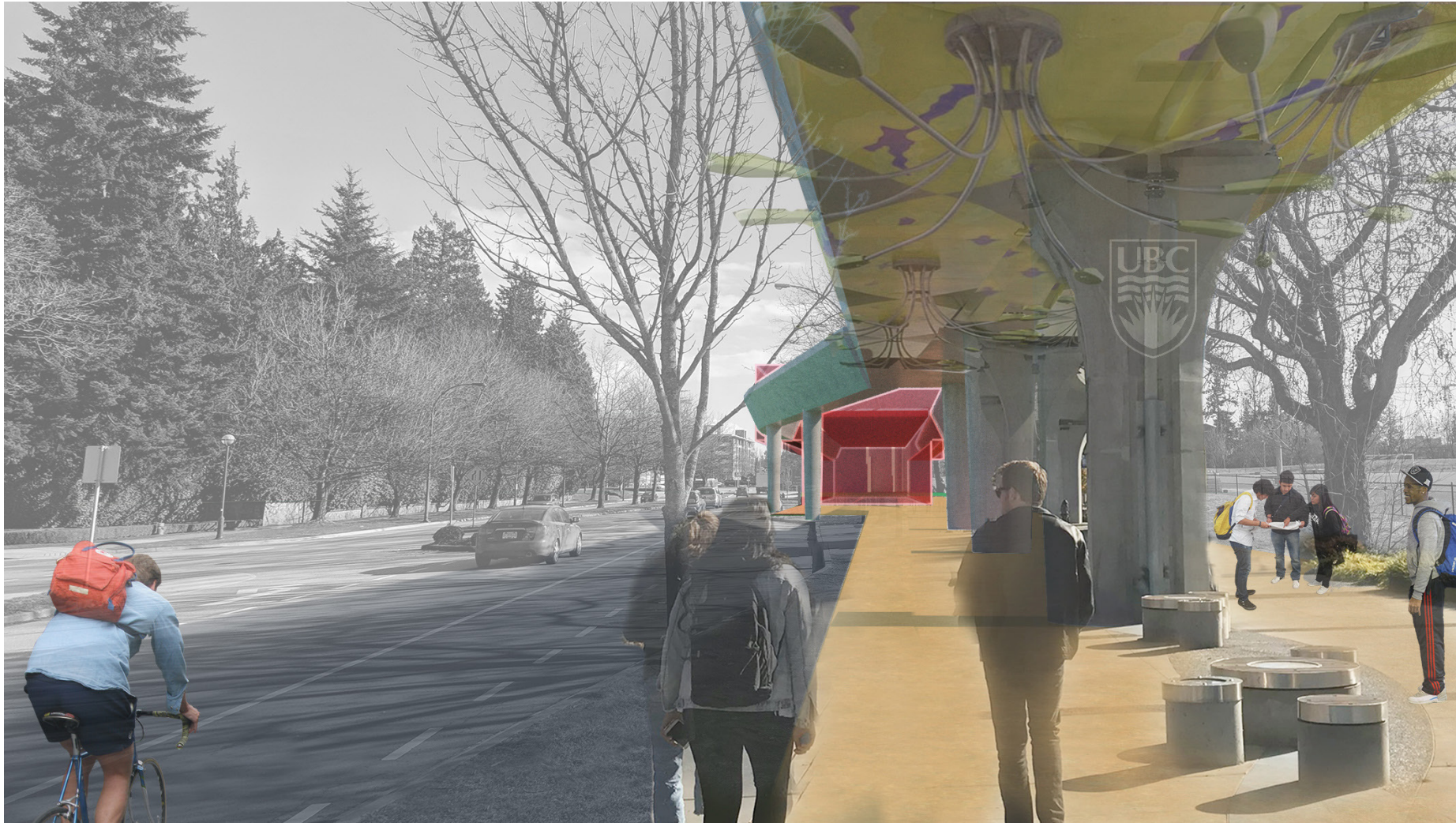
*Shaping the future*



IDENTIFYING OPTIONS

EXPLORING STRATEGIES

APPLYING STRATEGIES



**WESBROOK MALL** *Shaping the future*

Central Station





**Opportunities**

- Opportunity to shape future growth
- Enhance passive recreation
- Local and regional destinations

**Challenges**

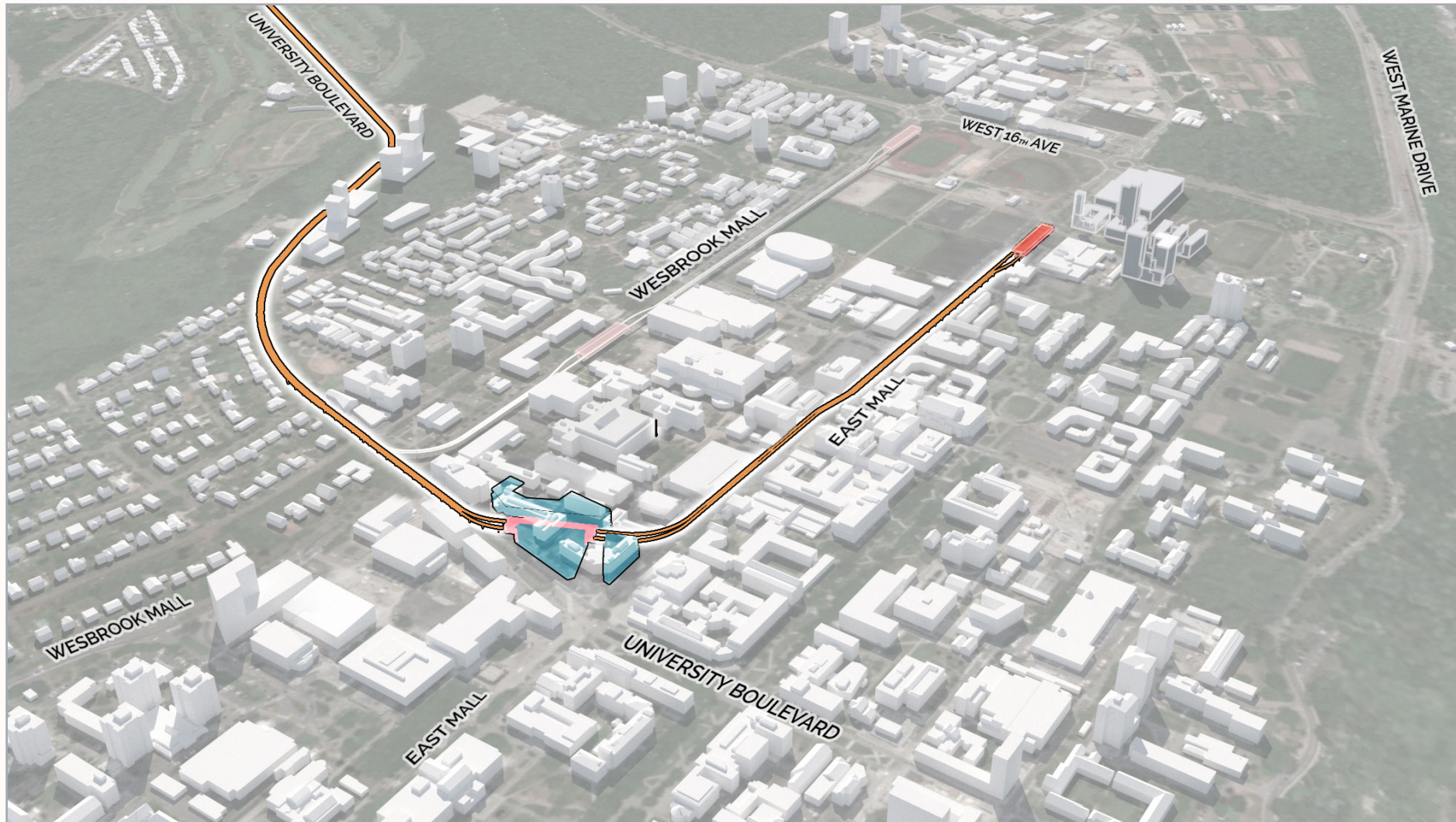
- East-west pedestrian barrier
- Disruption of permeable surfaces



IDENTIFYING OPTIONS

EXPLORING STRATEGIES

APPLYING STRATEGIES



# EAST MALL

*Enhancing the Campus Heart*



IDENTIFYING OPTIONS

EXPLORING STRATEGIES

APPLYING STRATEGIES



**EAST MALL**

*Enhancing the Campus Heart*

Central Station



# IDENTIFYING OPTIONS

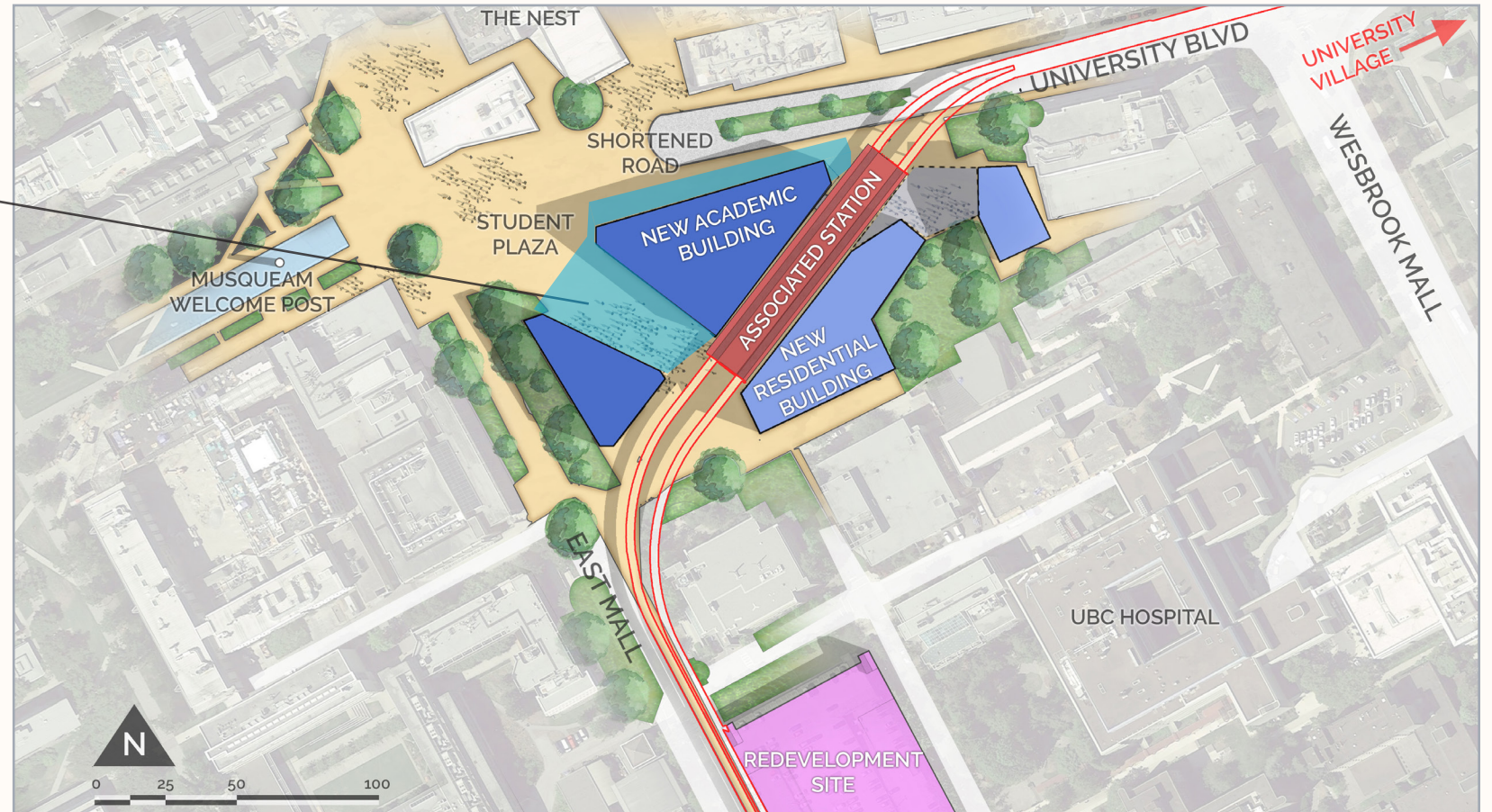
# EXPLORING STRATEGIES

# APPLYING STRATEGIES

## Covered Public Space



Nodes (2015)



**EAST MALL**

*Enhancing the Campus Heart*

Central Station



# IDENTIFYING OPTIONS

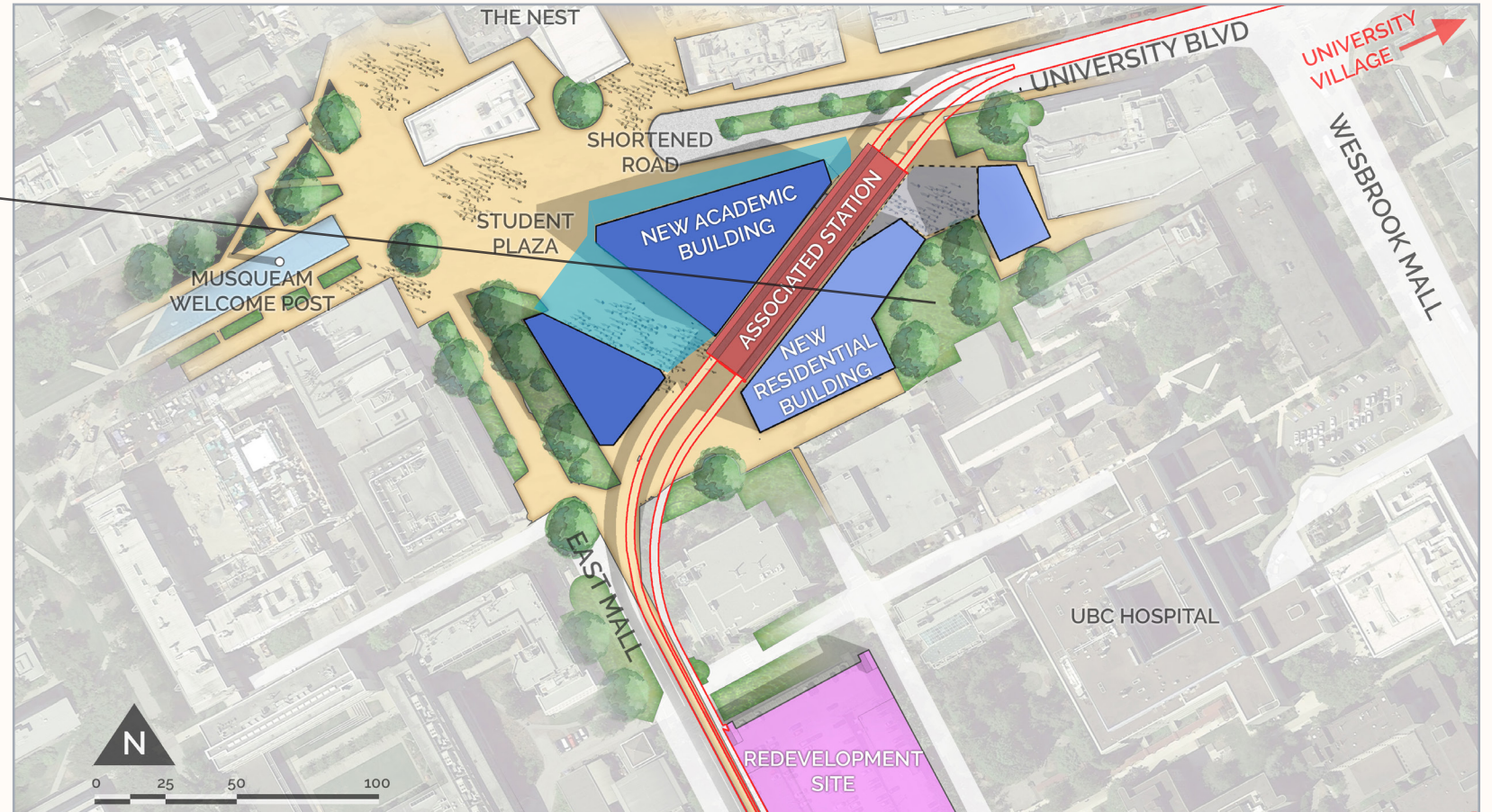
# EXPLORING STRATEGIES

# APPLYING STRATEGIES

## Neighbourhood Courtyard



Conrad & Partners (2017)



**EAST MALL**

*Enhancing the Campus Heart*

**Central Station**



# IDENTIFYING OPTIONS

# EXPLORING STRATEGIES

# APPLYING STRATEGIES

## Cantilevered Guideway

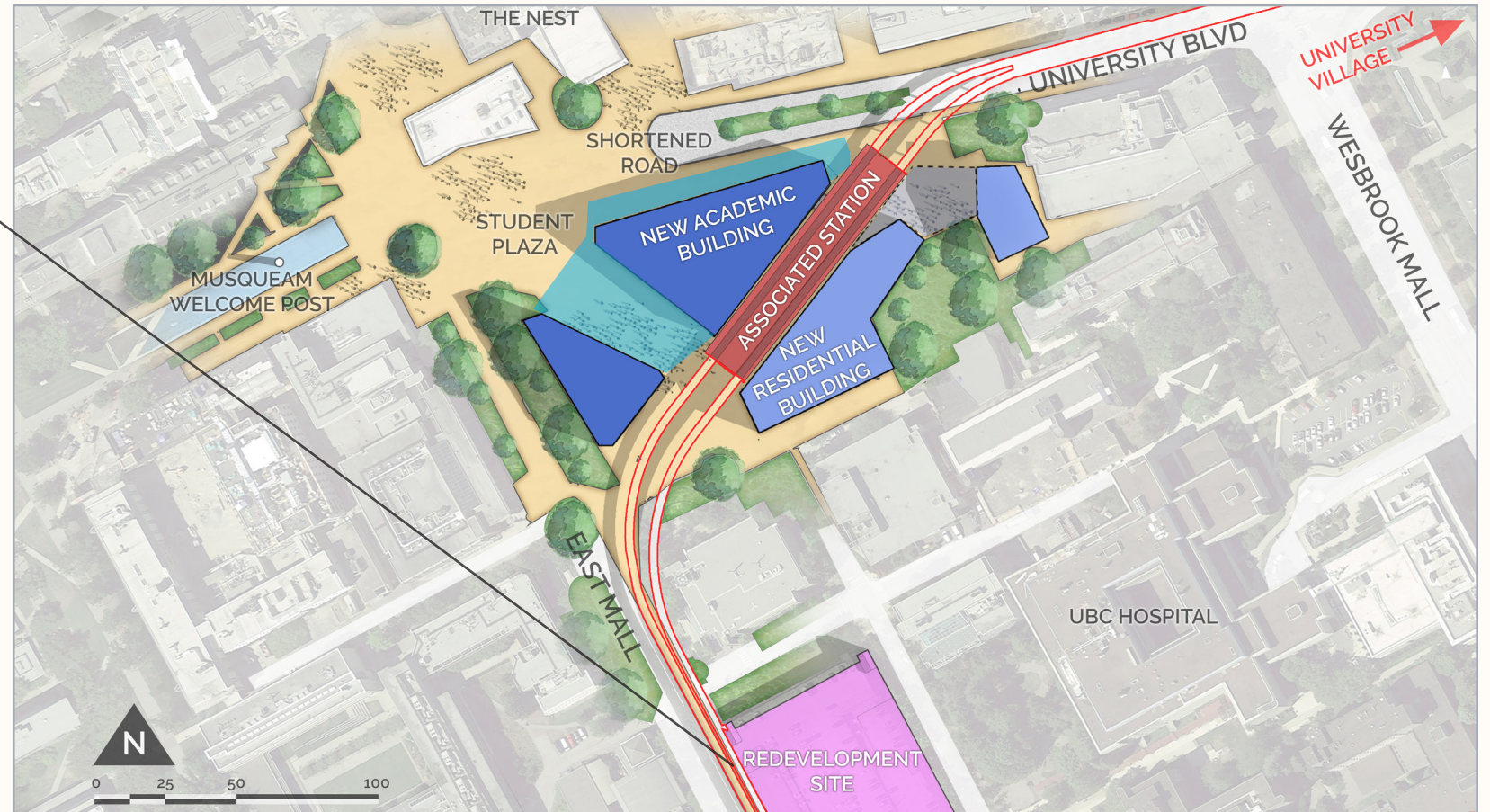


Team Monorail Westlake Station Proposal, Oocities (2009)

## EAST MALL

## Enhancing the Campus Heart

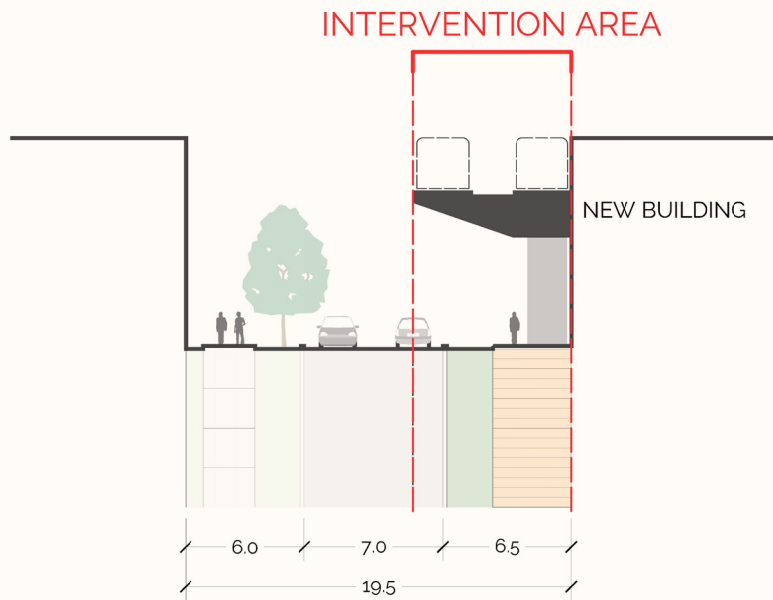
## Central Station



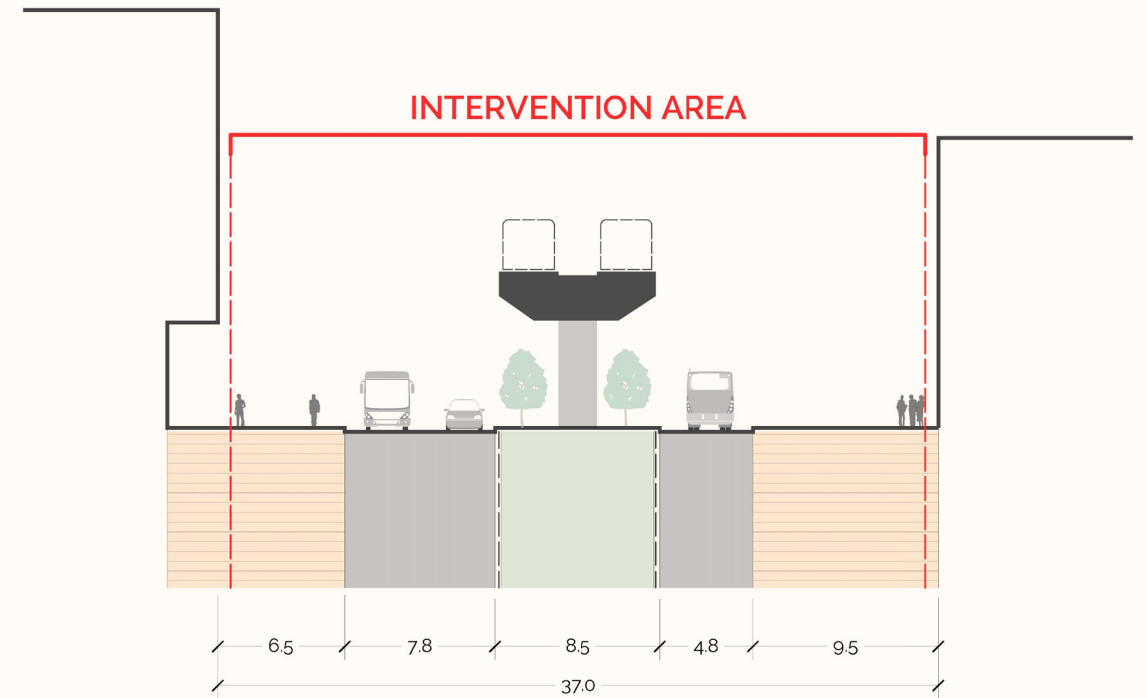
# IDENTIFYING OPTIONS

# EXPLORING STRATEGIES

# APPLYING STRATEGIES



EAST MALL NORTH  
FACING NORTH



UNIVERSITY BOULEVARD  
FACING EAST

**EAST MALL**

*Enhancing the Campus Heart*

Central Station



IDENTIFYING OPTIONS

EXPLORING STRATEGIES

APPLYING STRATEGIES



**EAST MALL**

*Enhancing the Campus Heart*

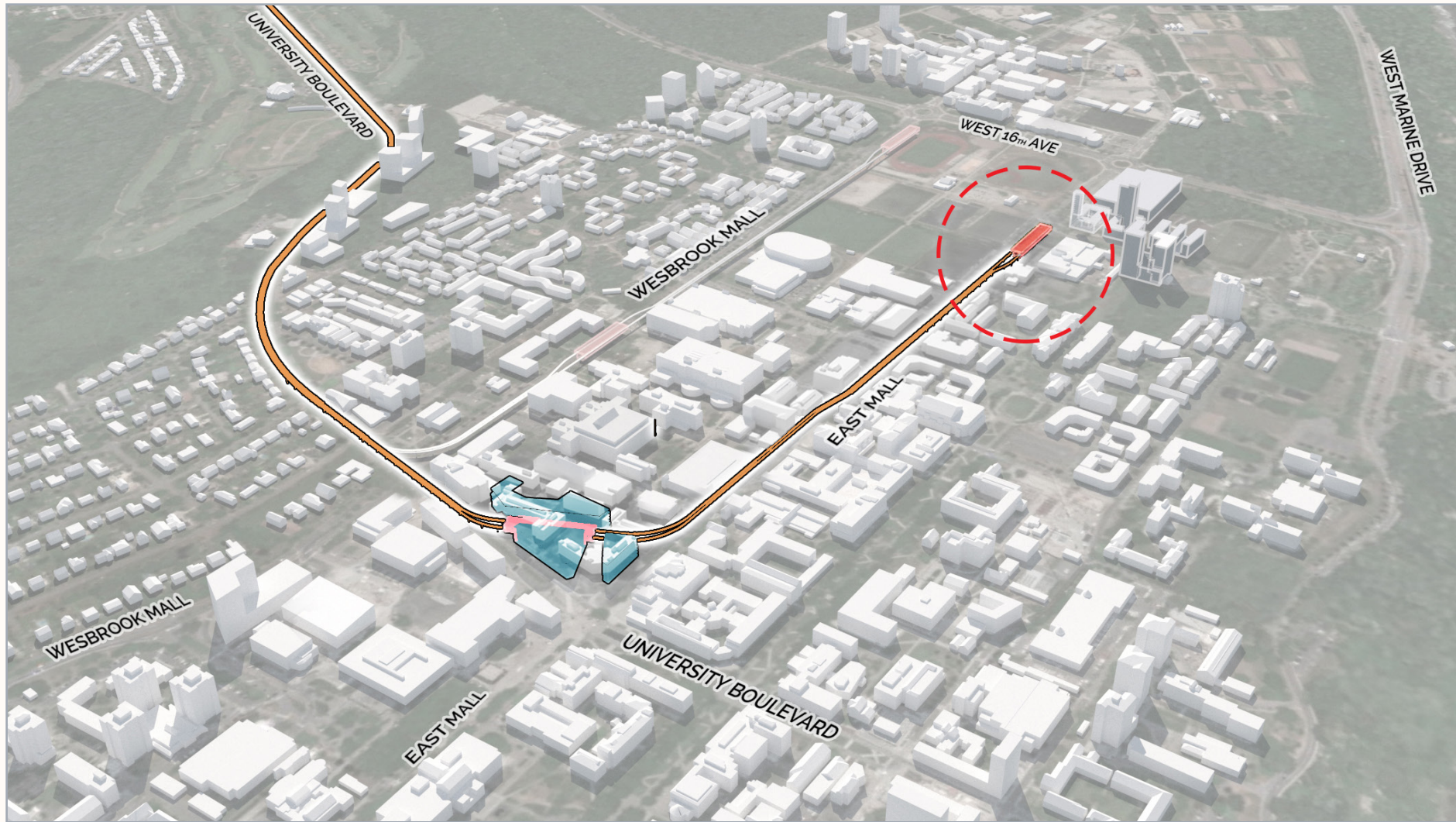
Central Station



IDENTIFYING OPTIONS

EXPLORING STRATEGIES

APPLYING STRATEGIES



**EAST MALL**

*Enhancing the Campus Heart*

South Station



Ground Floor Activation



Wind Street Nightlife, Swansea  
Omnia Space



**EAST MALL**

*Enhancing the Campus Heart*

South Station



Station Plaza



Plaza Saltillo, Austin, TX  
Endeavor Real Estate Group



**EAST MALL**

*Enhancing the Campus Heart*

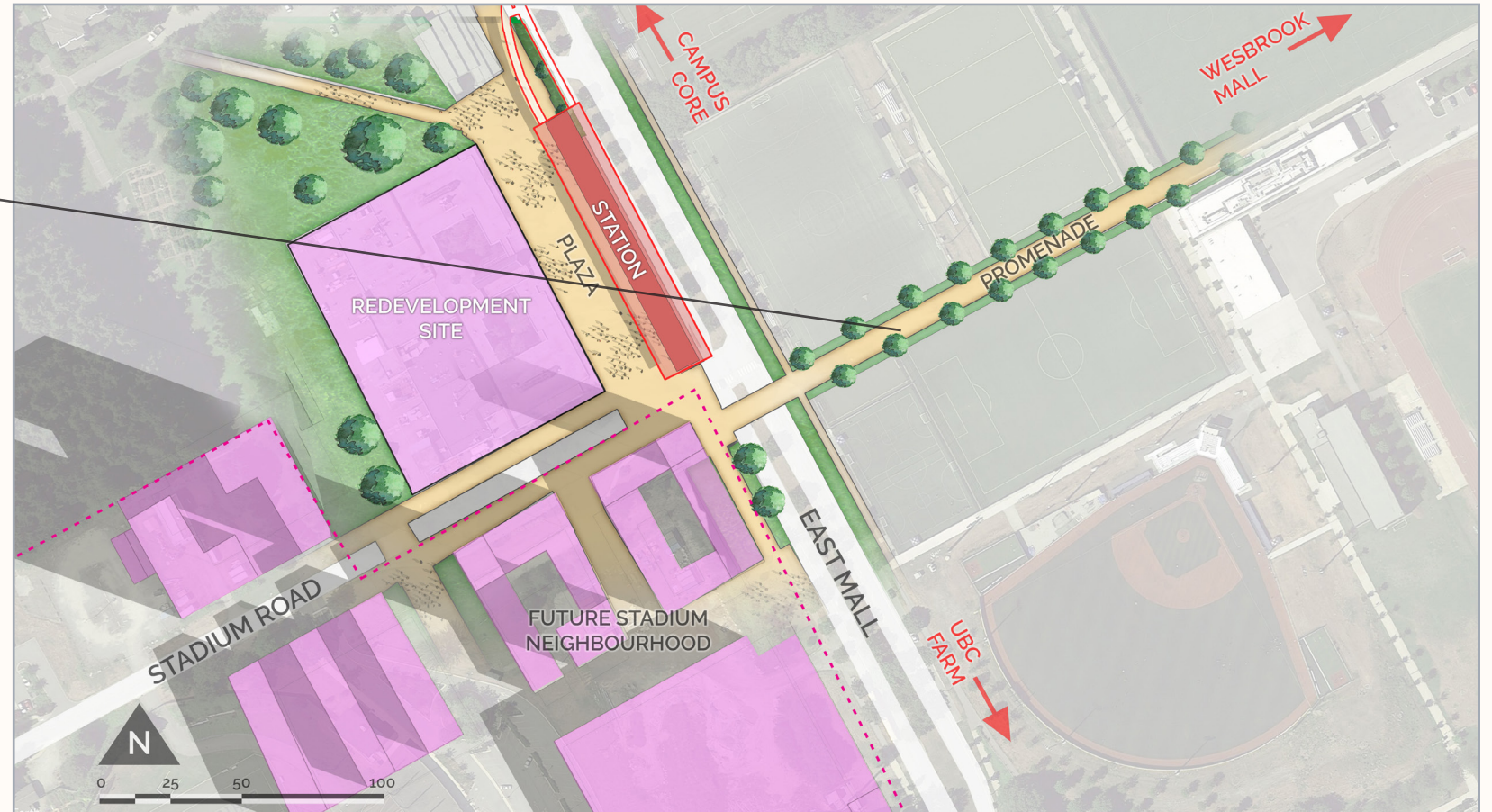
South Station



Pedestrian Promenade



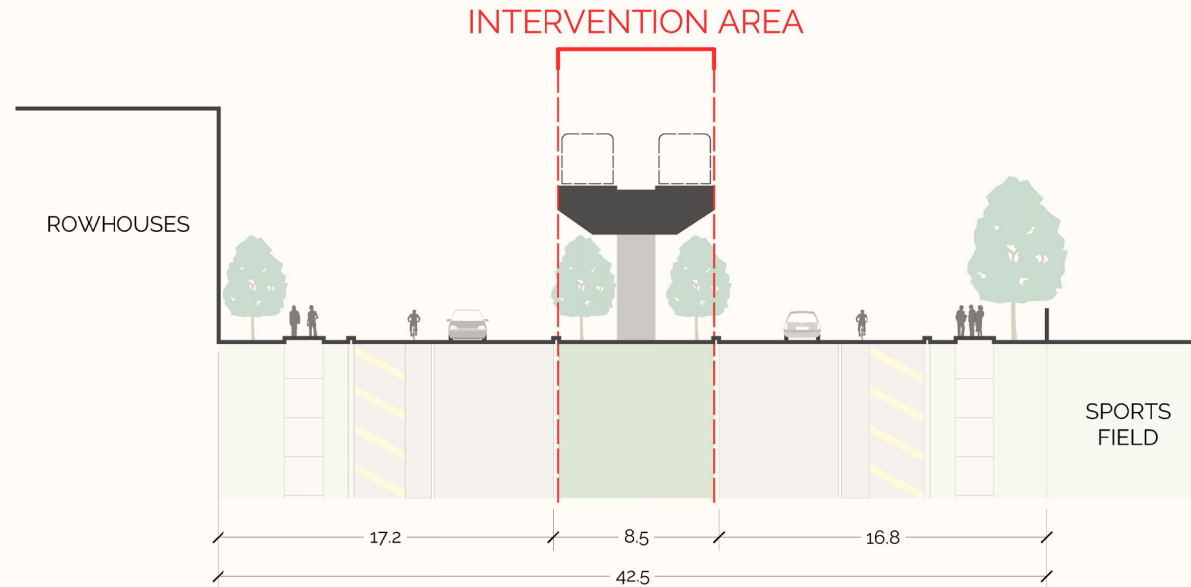
Front Street Promenade, Toronto  
McKinnon (2014)



**EAST MALL**

*Enhancing the Campus Heart*

South Station



EAST MALL SOUTH  
FACING NORTH



IDENTIFYING OPTIONS

EXPLORING STRATEGIES

APPLYING STRATEGIES



**EAST MALL**

*Enhancing the Campus Heart*

South Station





**Opportunities**

- Emphasizes Campus Heart
- Modal integration
- Supports mixed uses and land value capture

**Challenges**

- Creation of barrier
- Noise & vibration
- Disruption of ecosystem

**EAST MALL**

*Enhancing the Campus Heart*



## OPPORTUNITIES FOR FUTURE STUDY

Extension Back to Vancouver

Gateway and Street- Spanning Feasibility

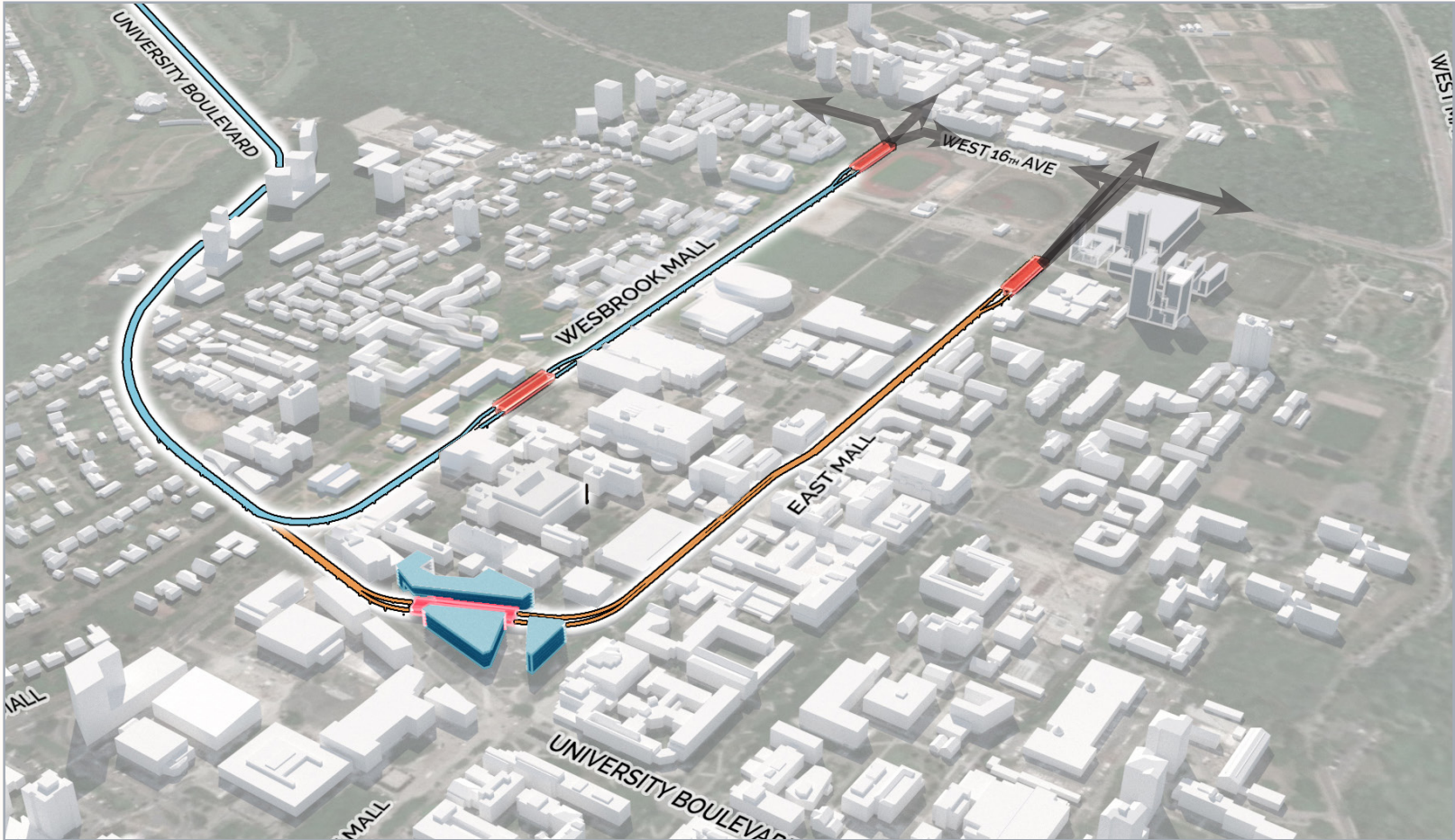
Guideway Specific Study

Provision of Ecosystem Services



# OPPORTUNITIES FOR FUTURE STUDY

Extension back to Vancouver





# OPPORTUNITIES FOR FUTURE STUDY

Extension Back to Vancouver

Gateway and Street- Spanning Feasibility



Transbay Transit Center, San Francisco  
Transbay Joint Power Authority

## OPPORTUNITIES FOR FUTURE STUDY

Extension Back to Vancouver

Gateway and Street- Spanning Feasibility

Guideway Specific Study



Brick, concrete, plants and recreation space beneath the tracks. Benefits of Elevated Rail "RailUP!" (2015).



# OPPORTUNITIES FOR FUTURE STUDY

Extension Back to Vancouver

Gateway and Street- Spanning Feasibility

Guideway Specific Study

Provision of Ecosystem Services



Silva Cells (Stebbins, 2017)

